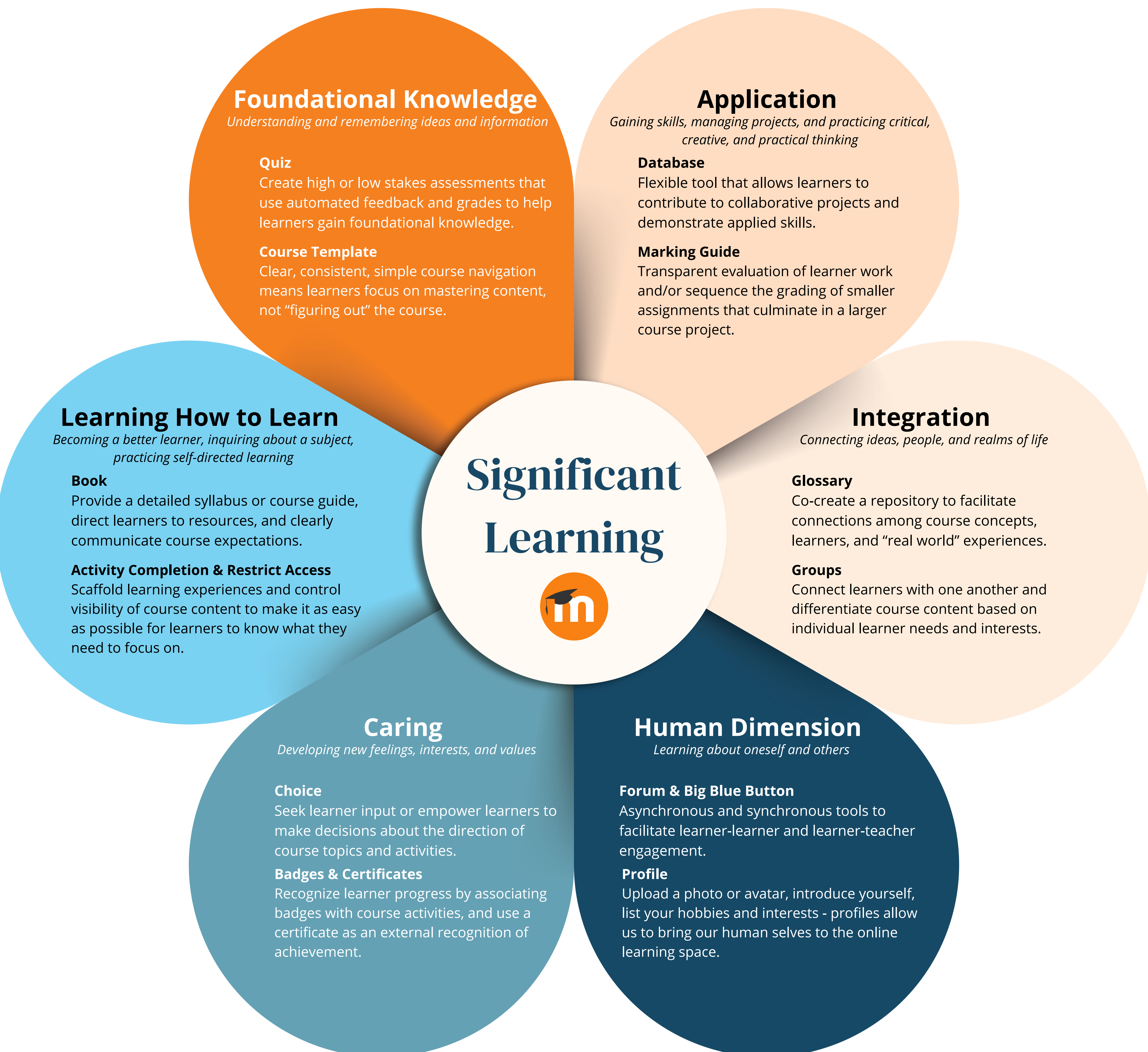


# Significant Learning Experiences in Moodle

## What is Significant Learning?

Fink's (2003, 2013) Taxonomy of Significant Learning seeks to go beyond traditional taxonomies of learning, such as Bloom's, which focus only on the cognitive domain identifying "...multiple ways that learning can be significant, [so that] teachers can decide which of various kinds of significant learning they want to support or promote in a given course or learning experience" (Fink, 2003, p. 1).



### Citations

- Fink, D. L. (2003) *What is Significant Learning?* Retrieved May 10, 2022 from [https://www.wcu.edu/WebFiles/PDFs/facultycenter\\_SignificantLearning.pdf](https://www.wcu.edu/WebFiles/PDFs/facultycenter_SignificantLearning.pdf)
- Fink, D. L. (2005) *A Self-Directed Guide to Designing Courses for Significant Learning*. Retrieved May 10, 2022 from <https://www.deefinkandassociates.com/GuidetoCourseDesignAug05.pdf>
- Fink, L. D. (2013). *Creating significant learning experiences: An integrated approach to designing college courses*. Jossey-Bass A Wiley Imprint.

### Learn More

Blog Post:  
Significant Learning Experiences in Moodle  
<https://moodle.com/news/significant-learning-experiences/>

Webinar Recording:  
<https://moodle.com/us/news/significant-learning-experiences-webinar/>



Lauren Goodman, Learning Design  
[lauren.goodman@moodle.com](mailto:lauren.goodman@moodle.com)



Heather Robinson, Learning Design  
[heather.robinson@moodle.com](mailto:heather.robinson@moodle.com)

