



Ok, Moodle!
When you don't have an AI
to set up your exams, but
you have an *EA**
*** Exam Assistant**

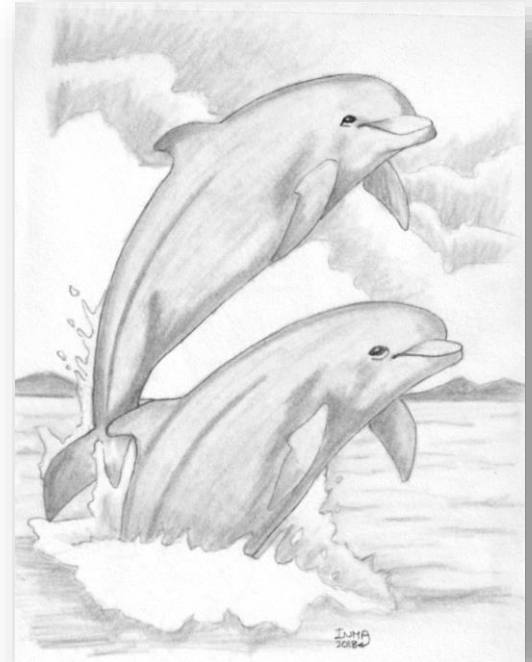
27-29 September 2022 | Barcelona, Spain

Inmaculada Montero
[@inmaelearning](https://twitter.com/inmaelearning)

moodlemoot
GLOBAL 2022

#MootGlobal22

Once upon a time



Let's start!!



#mootglobal22



Quiz Access rules



Core Quiz Access Rules (3.11)



Opens: Monday, 26 September 2022, 5:00 PM
Closes: Thursday, 29 September 2022, 5:00 PM

Open and close dates

Attempts allowed: 2

Number of attempts allowed

To attempt this quiz you need to know the quiz password

Password

Time limit: 10 mins

Time-limit

Grading method: Highest grade

- Ip address
- SEB
- Secure Window
- Offline attempts

Summary of your previous attempts

Attempt	State	Marks / 2.00	Grade / 10.00	Review
Preview	Finished Submitted Monday, 26 September 2022, 5:01 PM	0.00	0.00	Review

Highest grade: Not yet graded / 10.00.

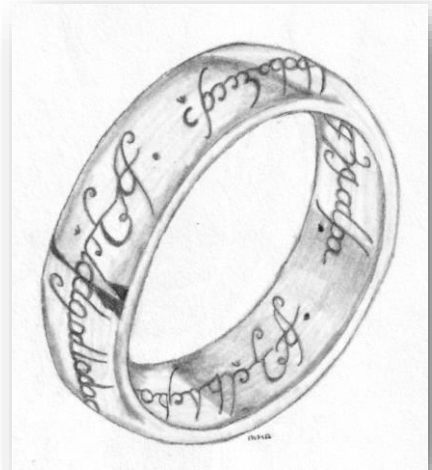
Delay between attempts

You must wait before you may re-attempt this quiz. You will be allowed to start another attempt after Monday, 26 September 2022, 5:03 PM.

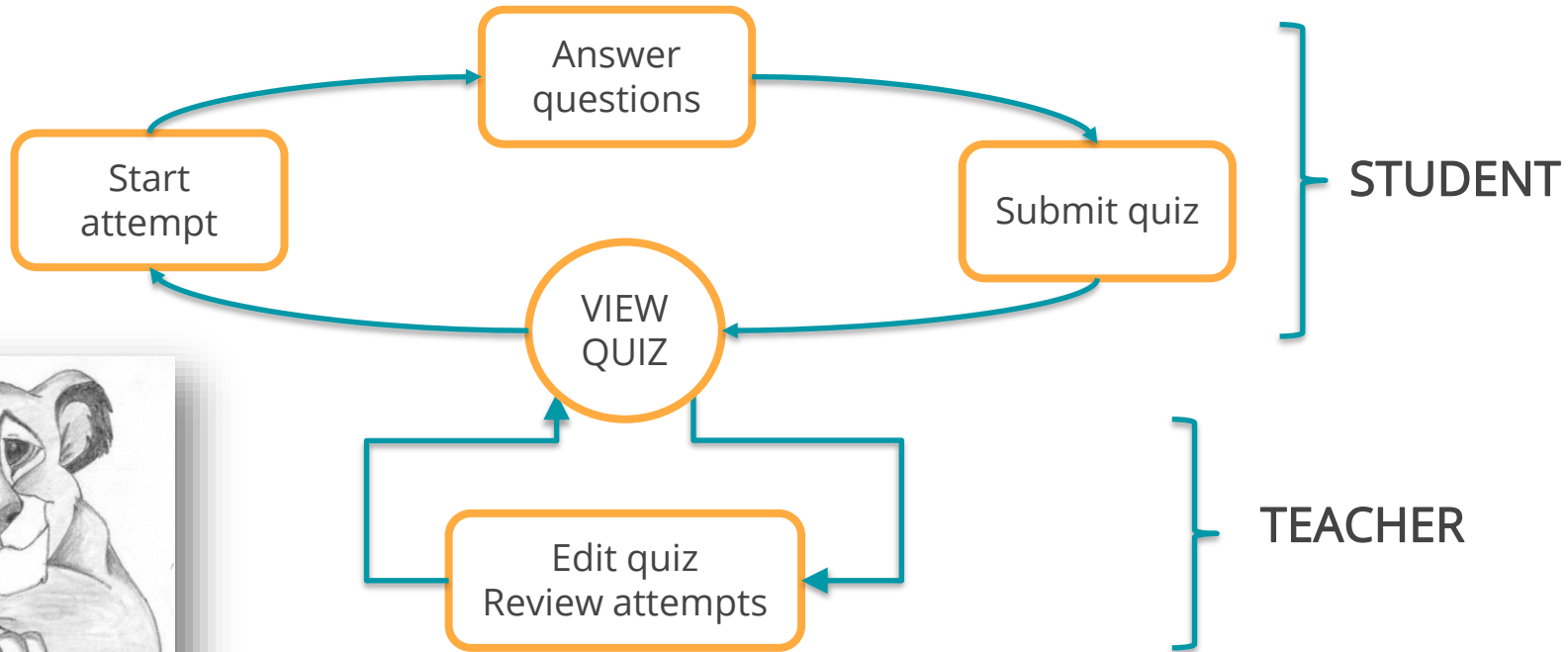
Community Quiz Access Rules (3.11)



- IP address list
- Concurrent Session Blocking Plugin
- Delayed attempts in quizzes
- Acknowledge plagiarism statement access rule
- Quiz fault-tolerant mode
- Quiz Wifi Resilience Mode
- Moodle Proctoring
- FullFace Access rule and EduSynch E-Proctoring (paid services)



The circle of Life



Inside the Rules



```
mod/quiz/accessrule/name/
  rule.php           - Contains the implementation of the quizaccess_name class.
  version.php       - Normal Moodle plugin version.php file.
  lang/en/quizaccess_name.php - Language strings for your plugin.
  db/*              - lets you define db tables, capabilities, etc.
  backup/moodle2/   - code to backup and restore any data.
    backup_quizaccess_name_subplugin.class.php
    restore_quizaccess_name_subplugin.class.php
  tests/*           - Unit tests.
```

What files make up a quiz access rule?

It is possible to make a working plugin with only the first *three* of these, but you will probably need more than that.



To infinity and beyond

We can change the behaviour of the quiz with functions from the *quiz_access_rule_base* class in order to:

- Check if the student has completed the attempt.
- Allow the student to attempt the quiz.
- Allow a new attempt.
- Display the quiz in a pop-up window.



To infinity and beyond

- Display information about the rules.
- Allow to continue with the current attempt.
- Require a pre-check before the student starts or continues with the attempt.
- Override any core rule with a third party rule.
- Add fields to the configuration page.
- Reset a specific configuration.
- Display a special counter.

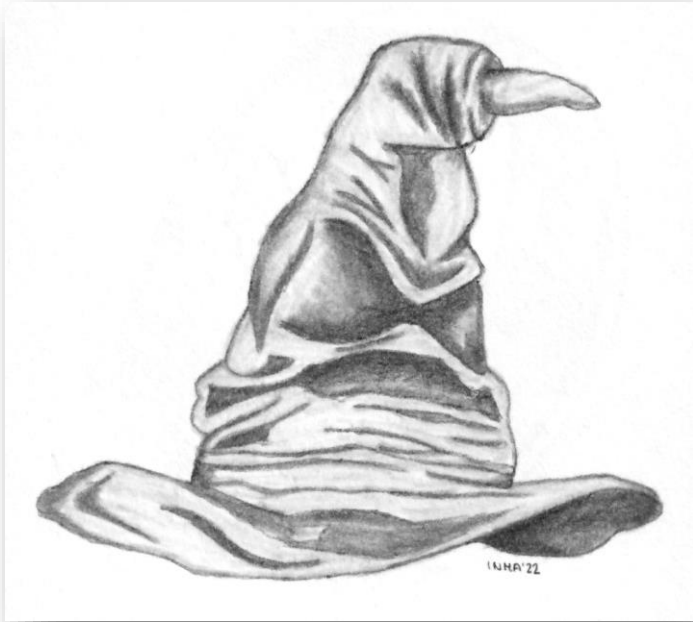
Our Functions:

- description
- make



Exam Assistant

I know! Gryffindor!



Types of quizzes:

- Self-assessment
- Gradable
 - ❖ Ordinary
 - ❖ Extraordinary
 - ❖ Continuous assessment
- Others

Why so serious?

Many of the problems that we had during on-site exams with a personal computer were caused by **exam misconfiguration**.
For example, group access restrictions that overrode each other.

Could we avoid this?



“Hold the door” (What we did)



Exam setup Assistant:

- Quiz access rule plugin focus on the teacher
- Adjustable functionality
- Constantly updated

Result:

- Incidents during the exams are highly reduced

Rules were there to be broken

Quiz Access Rules are focused on
the Student's access.



But you can focus on the Teacher.

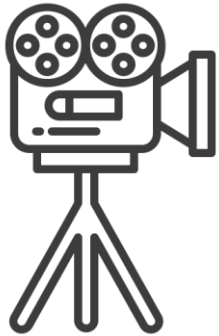
How EA is made

```
mod/quiz/accessrule/examassistant/  
rule.php           - Contains the implementation of the quizaccess_examassistant class.  
version.php        - Moodle plugin version.php file.  
lang/en/quizaccess_examassistant.php - Language strings for our plugin.
```

Rule (class quizaccess_examassistant extends quiz_access_rule_base):

- **Make** function: Check if the user has editing permissions.
- **Description** function: Information that we want to show the teacher. It checks settings on the quiz and shows the user the misconfigurations.

Behind the scenes



Checks:

- Wifi selected
- One attempt allowed
- Automatic submission
- Opening and closing date (same day)
- Time limit
- Proctoring software is enabled
- Randomness

Behind the scenes



More checks:

- Password
- Quiz is not hidden
- Images within questions are hosted locally
- Incorrect answers are penalised
- Incorrect access restrictions
- ... and many others

Winter is coming: EA

Misconfigured exam

EXAM SETUP ASSISTANT (EA)

This wizard will help you to set up your gradable exams correctly.

Below is the list of items you need to check. Once you have corrected them, the warning will change colour (from red to blue):

- Timing
 - The opening date is missing.
 - The closing date is missing.
 - Missing to select "automatic submission".
 - The time limit set for the exam is missing.
- Grade
 - The number of attempts allowed is greater than 1.
- Layout
 - The number of questions per page is more than 1.

Additional Information:

- Exam Question Bank
 - Number of quiz questions: 0
 - Number of NON-random questions: 0
 - Total number of questions contained in the question bank used in the exam: 0
 - Ratio of number of exam questions vs. number of questions in the question bank: 0/0
 - Last modified exam question bank: Never

MISCONFIGURATIONS

ADDITIONAL INFORMATION

No questions added yet

Edit quiz

Back to course

#mootglobal22



Winter is coming: Misconfigurations

Below is the list of items you need to check. Once you have corrected them, the warning will change colour (from red to blue):

- Timing
 - The opening date is missing.
 - The closing date is missing.
 - Missing to select "automatic submission".
 - The time limit set for the exam is missing.
- Grade
 - The number of attempts allowed is greater than 1.
- Layout
 - The number of questions per page is more than 1.
- Question behavior
 - Answers are not randomly ordered.
- Security (Password, Wi-Fi Network, Re-entry Lock, Dual Device Lock...)
 - No password is set.
 - Lockdown Browser is not activated.
 - Exam Re-entry Lock is not activated.
 - You have not selected a Wi-Fi network to take the exam.
- Edition the quiz
 - No questions have been assigned to the quiz.
 - "Reorder questions randomly" is not selected.



Winter is coming: Additional Information

Additional Information:

- Exam Question Bank
 - Number of quiz questions: 0
 - Number of NON-random questions: 0
 - Total number of questions contained in the question bank used in the exam: 0
 - Ratio of number of exam questions vs. number of questions in the question bank: 0/0
 - Last modified exam question bank: Never

Winter is coming: Well configured quiz

Configured Exam

EXAM SETUP ASSISTANT (EA)

The exam is configured correctly.

Additional Information:

- Wi-Fi allowed
 - Uax-exams (Villanueva and Severo Ochoa)
- Exam Question Bank
 - Number of exam questions: 1
 - Number of NON-random questions: 1
 - Total number of questions contained in the question bank used in the exam: 1
 - Ratio of number of exam questions vs. number of questions in the question bank:
 - Last modification of the exam question bank: Friday, February 25, 2022, 09:09

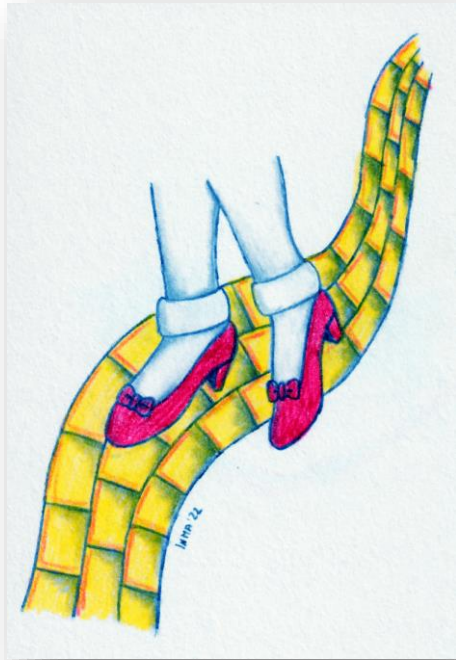
Allowed Attempts: 1

This quiz closed on Friday, February 25, 2022, 3:59 PM

Maximum time limit (it will depend on the exam start time and will never exceed the exam end time): 1 hour



There's no place like home



What teachers get from EA:

- To make sure their exams are set up correctly.
- Safe and secure quiz access

Service Desk obtains from EA:

- Speed in resolving incidents
- Quick check correct configuration
- Reduction of incidents due to misconfiguration

Evolution

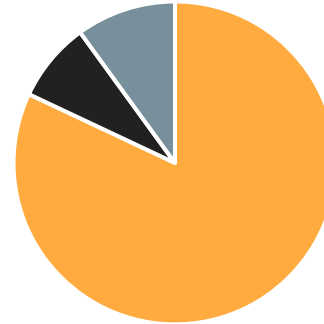


% Incidents (January 2022)



- Miscellaneous
- Exams (misconfiguration)
- Exams (others)

% Incidents (June 2022)



- Miscellaneous
- Exams (misconfiguration)
- Exams (others)

Avengers, assamble!

And... Is developing the only thing we need to do?

No! **We need to do it together with:**

- Trainings
- Email campaigns
- Mentoring sessions
- Manuals
- An email alert system
the day before the exam



TEAM WORK HIGHLY RECOMMENDED!

With Great Power comes Great Responsibility

- Talk to the users to **understand their problems or needs.**
- Think about **how your knowledge can help** them.
- Create **new features** and **new plugins.**

DO YOUR MAGIC AND SAVE THE WORLD!



All the best people are crazy



Thank you
Noodle



moodle moot

GLOBAL 2022

Inmaculada Montero

[@inmaelearning](https://twitter.com/inmaelearning)

[#mootglobal22](https://twitter.com/mootglobal22)

